

Wiltshire Council

Health and Wellbeing Board

Subject: Update on the delegation of accountability for commissioning of further primary care services (pharmaceutical services, primary ophthalmic services, and dental services) from NHS England (NHSE) to Integrated Care Board (ICB) from April 2023.

Executive Summary

- I. The White Paper “Integration and Innovation: working together to improve health and social care for all” in February 2021 set the direction for Integrated Care Systems to become responsible for a greater range of primary care services – namely to take on the responsibility for Pharmaceutical Services (including Dispensing Doctors and Dispensing Appliance Contractors), general Ophthalmic Services, and Dental (Primary, Secondary and Community); this was confirmed by the Health and Care Bill published in July 2021, which confers the duty on Integrated Care Boards to secure the provision of these services for their populations.

- III. For BSW this covers:
 - 147 Community Pharmacies (April 23)
 - 86 total opticians including domiciliary (June 23)
 - 117 Dental Contracts (June 23)

- IV. The BSW ICB POD Delegated Allocation for 2023/24 is £88.619m. £51.304m of the Delegated POD allocation is ringfenced for Dental services and “NHS England reserves the right to direct any unused resources to be used on improving dental access or other NHS England priorities or, exceptionally, the unspent allocation is returned to NHS England”.

- V. In BSW, our ambition is to realise the benefits of further delegation on the way in which we can deliver care locally and to form stronger place-based partnerships. We have been working in partnership with NHS England during 2022 ahead of taking further responsibilities from 2023.

Proposal(s)

It is recommended that the Board:

- i) Note the update.

Reason for Proposal

To update the Health and Wellbeing Board on the progress to date and the key priorities for each of the service areas.

Jo Cullen

Director of Primary Care

BSW ICB

Subject: Update on the delegation of accountability for commissioning of further primary care services (pharmaceutical services, primary ophthalmic services, and dental services) from NHSE to ICB from April 2023.

Purpose of Report

1. To update the Health and Wellbeing Board on the delegation of accountability for commissioning of further primary care services (pharmaceutical services, primary ophthalmic services, and dental services) from NHSE to ICB from April 2023.

Relevance to the Health and Wellbeing Strategy

2. The opportunities provided by the delegation of these services to BSW are seen as:
- The ability to be locally responsive to population health needs and commission services accordingly.
 - A tailored approach working with partners to respond to health inequalities and ensure a focus on preventative care.
 - Transformation and pathway integration – greater ability to integrate these services into local transformation and system working both within the place and system agendas and to incorporate these services more fully into a local primary care strategy.
 - The ability to develop closer relationships which can then support increased partnership working at all levels further integrating care delivery in Primary Care Networks
 - The opportunity to build a more integrated clinical and professional leadership model which reflects the wider primary care system.
 - The ability to involve the wider primary care services in developing approaches to quality improvement and supporting wider primary care resilience.

All contributing to:

- ✓ Joint Strategic Needs Assessment and Health & Wellbeing Strategies
- ✓ BSW Integrated Care Strategy's 3 prioritised strategic objectives:
 - Focus on prevention and early intervention.
 - Fairer health outcomes
 - Excellent health and care services
- ✓ Core20Plus5 for adults and children
- ✓ Fuller Stocktake – next steps for integrating primary care and development of integrated neighbourhood teams

Background

- Previously Clinical Commissioning Groups (CCG) held delegated responsibility from NHSE for commissioning primary medical services (GP Contracts), this commenced in 2017
- The ICB signed a Delegation Agreement on the 1st July 2022 to enable NHSE to delegate these functions to ICB under section 65Z5 of the NHS Act.
- The White Paper “Integration and Innovation: working together to improve health and social care for all” in February 2021 set the direction for ICBs to become responsible for a greater range of primary care services namely to take on the responsibility for Pharmaceutical Services (including Dispensing Doctors and Dispensing Appliance Contractors), general Ophthalmic Services, and Dental (Primary, Secondary and Community); this was confirmed by the Health and Care Bill published in July 2021, which confers the duty on ICB to secure the provision of these services for their populations.
- The ICB has been through a Pre-Delegation Assessment Framework (PDAF) which was approved by the NHS England Board in October 2022; and a Safe Delegation Checklist which provided a breakdown of key areas to be worked through by ICBs and NHSE to ensure readiness and assurance for delegation. Internal Audit has reviewed the processes and arrangements. Briefing papers have been taken to the ICB and its Committees for assurance and sign off during 2022/2023.
- Workstreams have been set up including quality, finance, contracts, governance and digital.
- Governance for delegation is underpinned via a Delegation Agreement, Memorandum of Understanding, Data Protection Information Agreements and Financial Standard Operating Procedures.
- For the South West, a Collaborative Commissioning Hub (CCH) has been established by NHSE to support continued delivery by current staff (POD commissioning, GP Transformation Team and Complaints), and will incorporate the functions involved in commissioning services for the seven South West ICBs.
- The programme has now moved into the Transition Phase with NHSE and South West ICBs; and a BSW Transition Steering Group have been established.
- From 1 July 2023, CCH will transfer to an ICB employer arrangement with Somerset ICB, until April 2024 with NHSE still responsible for activity.
- Process now to secure ICB to host full CCH on longer term basis from April 2024 (include all commissioning teams covering POD, specialised

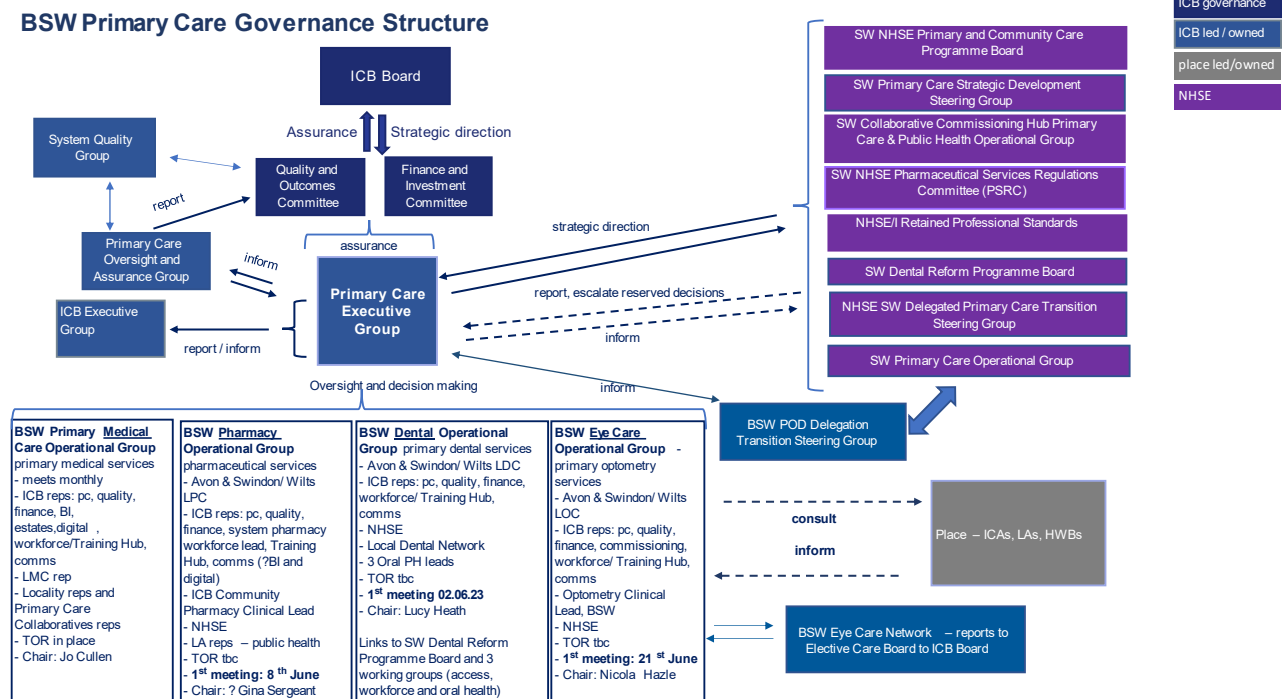
services, health and justice, and screening and immunisation, as well as commissioning quality and commissioning finance colleagues).

Main Considerations

4. Progress to date:

- Three Operational Groups have been established for pharmacy, dental and eye care services reporting to the BSW Primary Care Executive Group for oversight and decision making.
- The Eye care Operational Group will now link into the established BSW Eye Care Services Network meeting to support and understand the ongoing work that has been established in the group
- BSW representation at NHSE South West meetings and working groups has been established
- Governance structure across the BSW and NHSE system has been developed (diagram one)

Diagram One – BSW Primary Care Governance Structure



5. **Current Priorities:**

- **Current BSW priorities for Community Pharmacy are:**
 - To establish roles for Community Pharmacy PCN leads.
 - Increase use of the Community Pharmacy Consultation Service (taking referrals both from GPs and NHS 111) to support the system with minor illness and urgent care.
 - Increase use of the locally commissioned Patient Group Direction Service for minor illness (legal framework that allow a pharmacist to provide specified Prescription Only Medicines in certain circumstances) & review this service in the event of a national Common Conditions Service being commissioned.
 - Increase Discharge Medicines Service referrals from acute trusts to community pharmacy. For every 10 referrals, one readmission to hospital is prevented and there are significant patient safety benefits.
 - Implementation of new clinical services that support integration such as the hypertension case finding service and contraceptive service, which help tackle health inequalities.
 - BSW submitted expression of interest to be a Pathfinder Site for Independent Prescribing in Community Pharmacy.

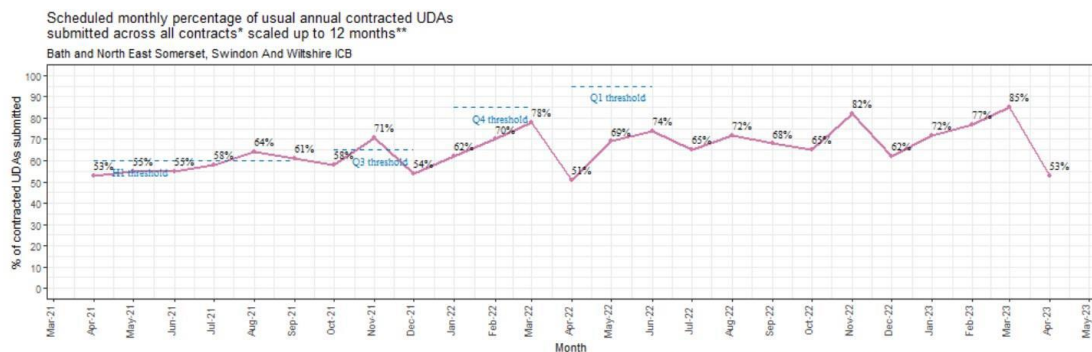
- **Current BSW priorities for Eye Care Services include:**
 - BSW Eyecare Strategy has three strategic priorities:
 - Patient Communication/Information/Education
 - System Mapping
 - Optometry First (First Contact Practitioners (FCP) for community and secondary care settings)
 - Tackling health inequalities increasing access to ophthalmology services (deprived areas, homeless).

- **Current BSW priorities for Dental Services include:**
 - The National priorities for dental care are:
 - Increase access.
 - Reduce inequalities.
 - Improve oral health.
 - Core20Plus5 sets out oral health implications for all, and key clinical areas of health inequalities for children.
 - Oral Health in Care Homes (already a group led by NHSE Dental Public Health pulling together a framework to implement an oral health and dental care pathway for care home residents)
 - Children's Programme Board
 - Diabetes and CVD
 - Access to urgent dental care and stabilisation pilots (some specific local work underway in Wiltshire/Swindon for service users in refugee/asylum accommodation)
 - Making Every Contact Count (MECC)
 - Workforce – recruitment and retention

6. Overview of Performance:

Dental:

Scheduled data: The monthly percentage of usual annual contracted UDAs submitted and scaled up to 12 months for the South-West was 46%. The value for BSW was 52%.



• This graph shows the average monthly performance of the 106 GDS/PDS/PDS+ contracts scaled up by 12 months measured against the delivery thresholds (60% for Apr-Sep 21, 65% for Oct-Dec, 85% for Jan-Mar and 95% for Apr-Jun 22).

Pharmacy:

Advanced Community Pharmacy Consultation Service (CPCS) - in BSW, 142 out of 148 pharmacies (95.9%) participated in the Community Pharmacist Consultation Service; and the number of completed Minor Illness consultations April 2022 – March 2023 (referred to community pharmacies from GP Surgeries) completed 21,425 GPCPCS consultations in BSW. The ICB is working with Community Pharmacy Avon & Community Pharmacy Swindon & Wiltshire to continue to grow GP CPCS.

7. Next Steps

There is further work to develop and understand contractor performance and activity for the BSW system and its population.

Work continues with the POD commissioning hub team to ensure integration and inclusion into BSW system priorities and workstreams.

Report Author: Jo Cullen, Director of Primary Care BSW ICB